

The Children of God Orphanage

School concept layouts

CONTEXT:

The School design is developing from historical and cultural context of Sierra Leone.

Therefore, school have simple structures and design. Every of them are structure with one annex and have one floor. It respond to the environmental and cultural context of its location. School facilities has covered corridors, and every classroom has easy access to open spaces.

SUMMARY:

Education is organized in two schools, Primary and Secondary School. Primary school has two blocks, Secondary school has one block.

School is organized in double shifts. Every classroom has 60m² and it is predicted for 24 - 28 pupils.

Other two blocks are organized for library and school staff.

I. Elementary School

250 pupils per shift (in total 500 pupils)

GBA 392m²

II. Secondary School

150 pupils per shift - 100 pupils from Junior Secondary School and 50 pupils from Senior Secondary School
(in total 300 pupils)

GBA 456m²

III. Library Block with Teachers and Administration Block

GBA 324m²

CHILD-FRIENDLY SCHOOL:

- Every classroom has easy access to open spaces.
- Facilities have deck and covered corridors (verandas).
- Classrooms has double side windows and wall openings for cross ventilation.
- Separate toilets for boys and girls.
- Multi-activity classroom.
- Open stage

SCHOOL CONTENT:

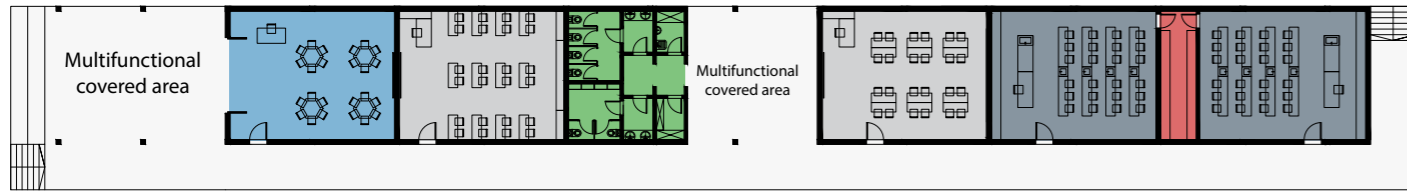
- 1) Multifunctional covered area
- 2) Multi-activity classroom / Art
- 3) Multi-activity classroom / Music
- 4) Classroom
- 5) Science classroom
- 6) Storeroom

LIBRARY WITH TEACHERS AND ADMINISTRATION CONTENT:

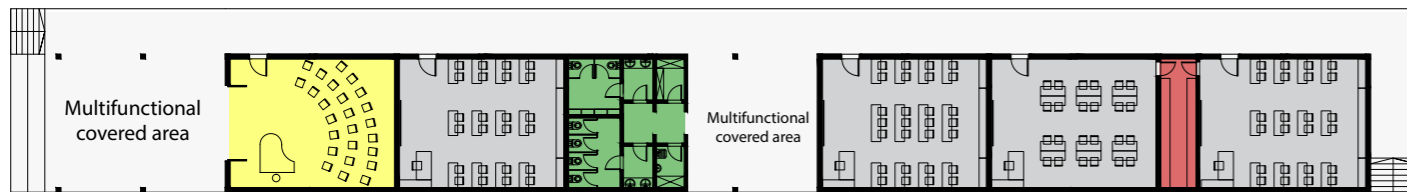
- 1) Library and reading room
- 2) Mediatheque
- 3) Multifunctional Hall
- 4) Meeting Room
- 5) Staff room
- 6) Administration
- 7) Storeroom
- 8) Toilets and Cleanroom

School Concept layouts

I. ELEMENTARY SCHOOL LAYOUT

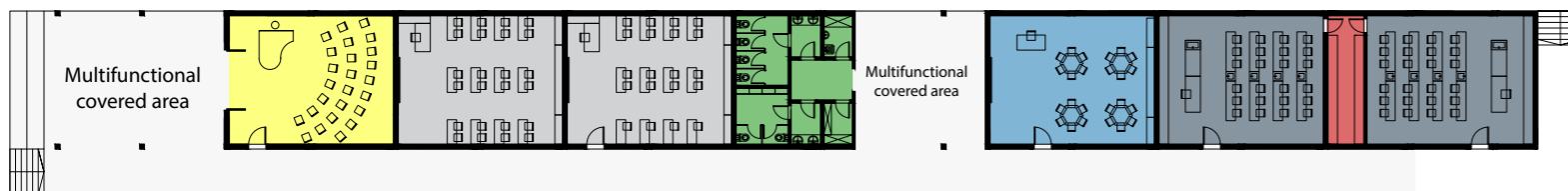


BLOCK 1



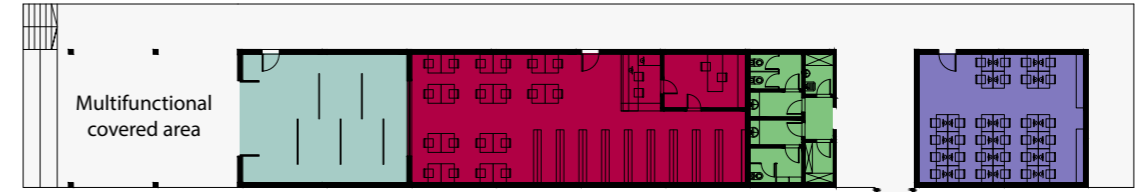
BLOCK 2

II. SESONDARY SCHOOL LAYOUT



BLOCK 1

III. LIBRARY BLOCK WITH TEACHER AND ADMINISTRATION BLOCK LAYOUT



LIBRARY BLOCK



TEACHERS / ADMINISTRATION BLOCK

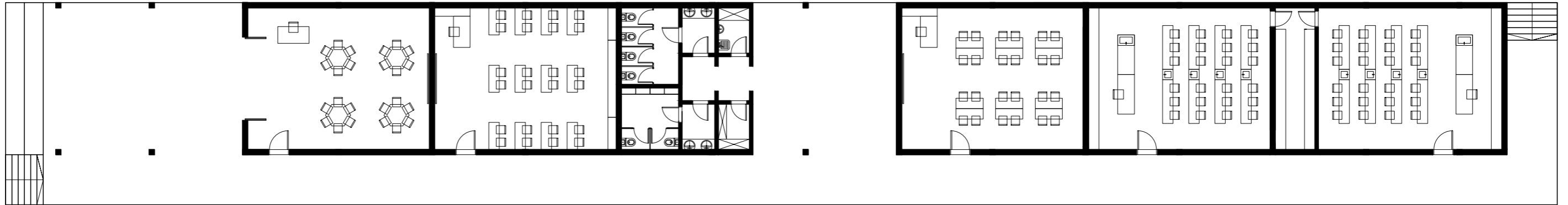
LEGEND:

SCHOOL

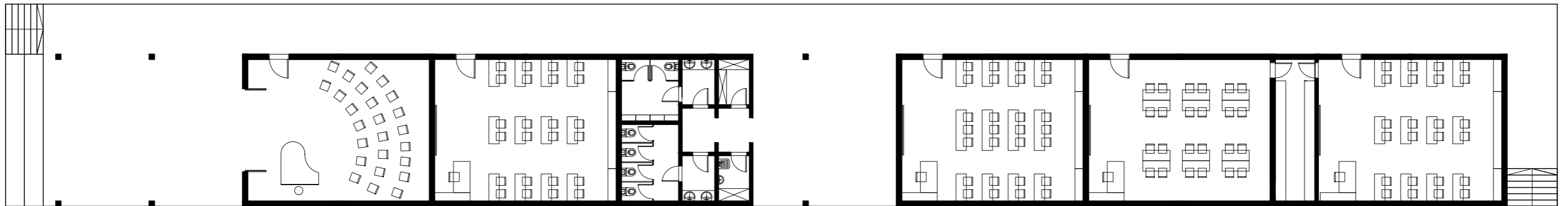
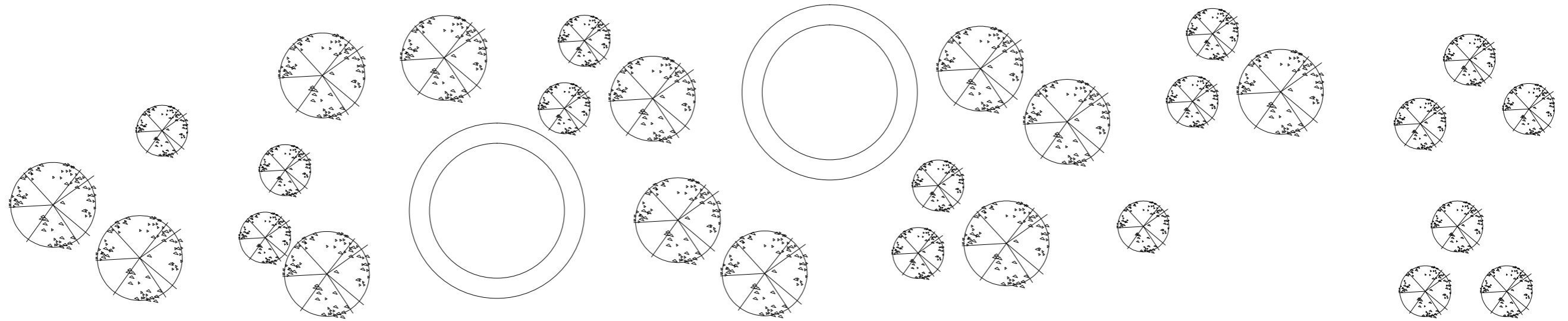
- Classrooms
- Multi-activity classroom / Art
- Multi-activity classroom / Music
- Science Classroom
- Storeroom
- Toilets and Cleanroom

LIBRARY WITH TEACHERS AND ADMINISTRATION

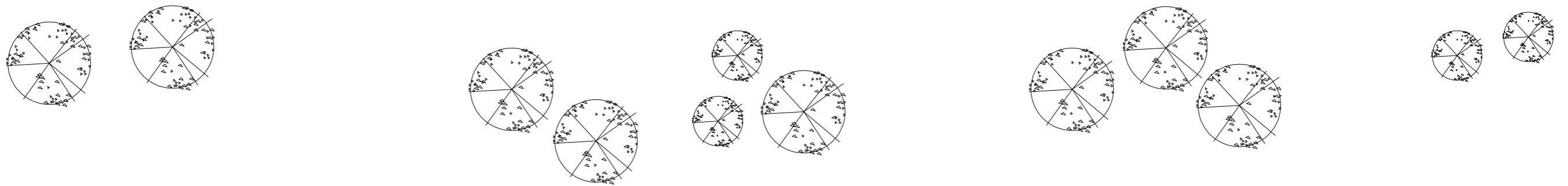
- Library and Reading Room
- Mediatheque
- Multifunctional Space
- Meeting Room
- Staff room
- Administration
- Storeroom
- Toilets and Cleanroom



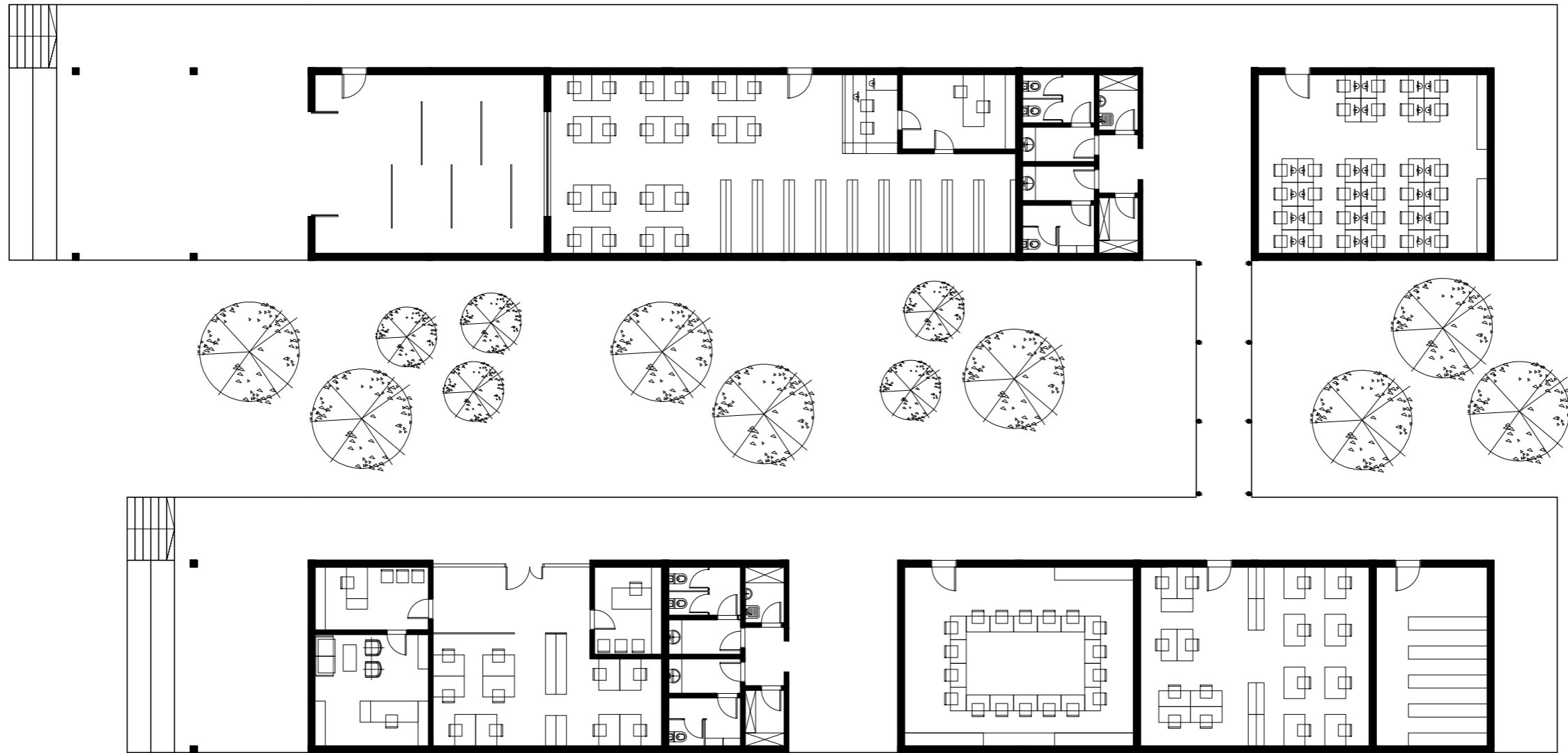
ELEMENTARY SCHOOL - BLOCK 1 | FIRST FLOOR PLAN | Gross Building Area 392m² | Covered Area with slab 720m²



ELEMENTARY SCHOOL - BLOCK 2 | FIRST FLOOR PLAN | Gross Building Area 392m² | Covered Area with slab 720m²



SECONDARY SCHOOL | FIRST FLOOR PLAN | Gross Building Area 457m² | Covered area with slab 808m²



TEACHERS AND ADMINISTRATION | FIRST FLOOR PLAN | Gross Building Area 593m² | Covered area with slab 1,096m²